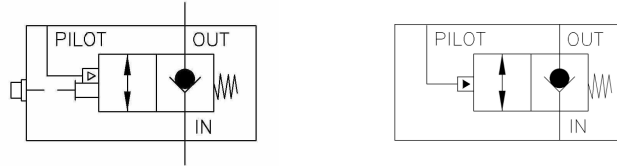
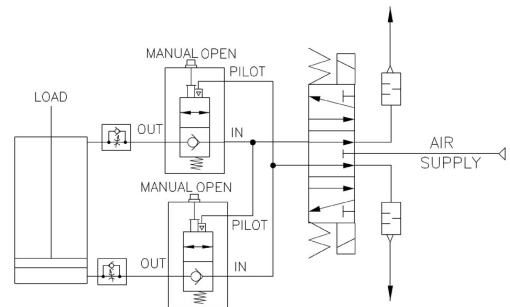


NU-CHECK® VALVES

An Aladco® Nu-Check® valve is a normally closed check valve that can be overridden by air piloting or manually to allow two way flow. The tightly sealed Nu-Check® valves are use on pneumatic devices to stop air release when the device is stopped, which prevents drifting of the device and any attached load.

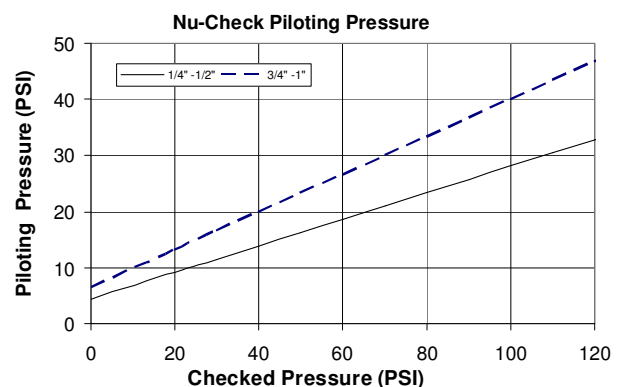


A typical use of a Nu-Check® valve involves combining it with a direction control valve to control air flow from ports of a pneumatic device. With an appropriate combination of direction control valves and other pneumatic components, a cylinder position control system using a Nu-Check® can handle both normal position control and standby or safety stop conditions. An example schematic for a double acting cylinder is shown. A combined valve system can have excellent failsafe and assured control properties.



Nu-Check® Features

- The rugged valve body is anodized 6061 aluminum. Internal aluminum components are 6061 Aluminum.
- Springs are high fatigue resistant Nickel coated 302 Stainless Steel. (MTTF is over 100 million cycles).
- Standard seals are BunaN (-30 to 150F temperature range). Viton seals (-15 to 400F temperature range) are an available option.
- Superior, self cleaning ball seal provides long product life. (MTTF is over 100 million cycles).
- Typical operating pressure range is 15-140 PSI.
- The valves are tamper resistant and do not require maintenance. The valves do not require lubricated air, but can be used with lubricated air or low pressure oil.

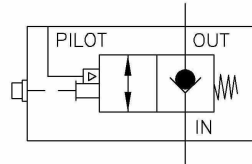
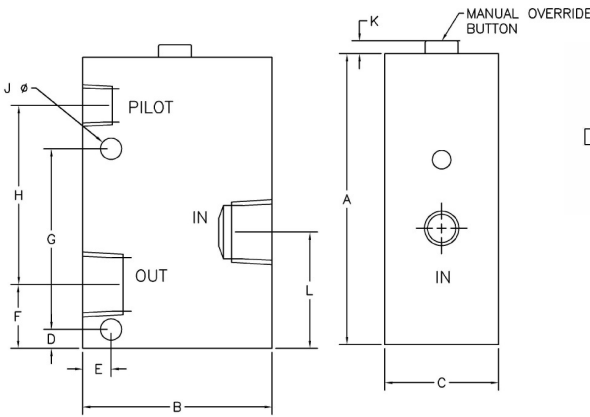


DIMENSIONAL DATA

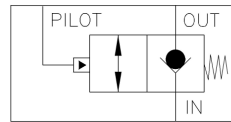
SPECIFICATIONS

Port Size	A	B	C	D	E	F	G	H	J	K	L	Pilot Port	Cv	Weight	Pilot Ratio
1/4"	3.83	2.00	1.50	0.25	0.38	0.85	2.38	2.34	0.28	0.22	1.50	1/4"	1.7	1.25	4:1
3/8"	3.83	2.50	1.50	0.25	0.38	0.85	2.38	2.34	0.28	0.22	1.50	1/4"	1.7	1.50	4:1
1/2"	3.83	2.50	1.50	0.25	0.38	0.85	2.38	2.34	0.28	0.22	1.50	1/4"	1.7	1.50	4:1
3/4"	5.35	3.00	2.00	2.00	0.42	1.04	2.00	3.88	0.28	0.20	2.58	1/4"	4.0	3.00	3:1
1"	5.35	3.00	2.00	2.00	0.42	1.04	2.00	3.88	0.28	0.20	2.51	1/4"	4.0	3.00	3:1

* A-L All dimensions in inches



Model Types 30 & 31 Schematic



Model Type 32 Schematic

MODEL ORDERING INFORMATION Valve model numbers are made up of 3 two character fields (6 total characters) with an optional suffix.

SEAL TYPE
01 - BunaN Seals
02 - Viton Seals

OPTION SUFFIX

blank NPTF Threaded ports
BSPB BSPB Threaded ports
HP High Pressure, 350 PSI rating
VAC Vacuum Valve
NCP No Cracking Pressure

Model Number



MODEL TYPE

30 Nu-Check -- Extended Override Button
31 Nu-Check -- Flush Override Button
32 Nu-Check -- No Manual Override

INLET OUTLET PORT THREADING

25 1/4" NPTF Thread (1/4" BSPB optional)
38 3/8" NPTF Thread (3/8" BSPB optional)
50 1/2" NPTF Thread (1/2" BSPB optional)
75 3/4" NPTF Thread (3/4" BSPB optional)
01 1" NPTF Thread (1" BSPB optional)

Model example:

Model **303801BSPB** is a Nu-Check valve with 3/8" BSPB Inlet/Outlet ports, BunaN seals and an extended override button.